



MS. BOOHER'S OPEN HOUSE 2023-2024

I will post this presentation on my webpage for future reference

COMMUNICATION

Group emails
with the Boo
Crew
News(letter)

Remind App

Emails with
questions or
concerns

Hawks Rise
Website

Hawks Rise
ListServ

Student
binder

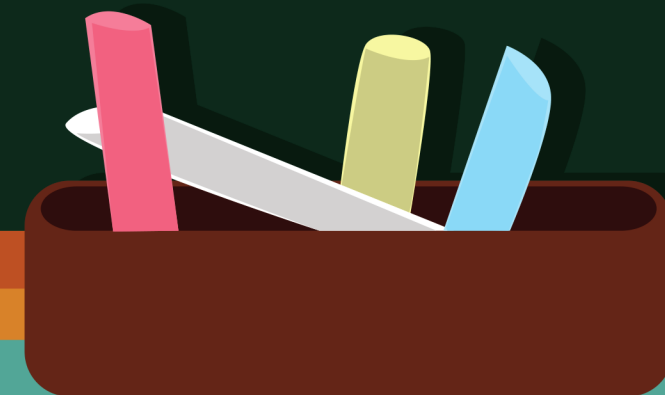


TEACHER WEBPAGE

<https://www.leonschools.net/domain/6254>

The easiest way to find the webpage is by
Googling "Ms. Booher Hawks Rise Elementary"

ELA INFO

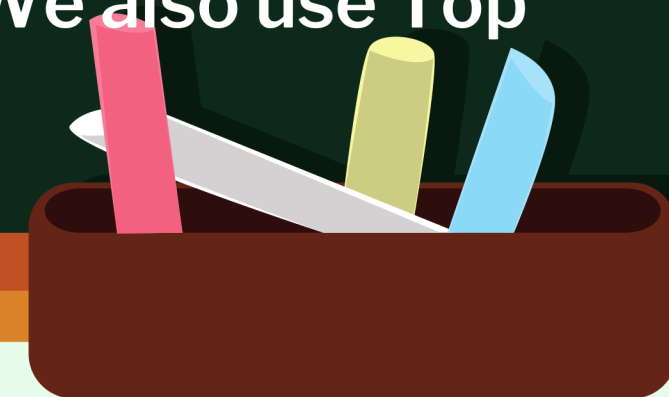


STANDARD PUPIL PROGRESSION

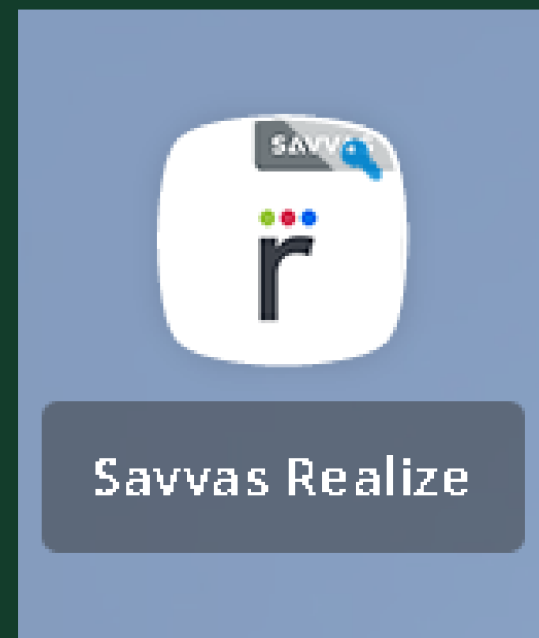
MyView Florida is the district adopted ELA curriculum. You can access it digitally on your students Classlink page. It says "Savvas Realize"

We have hard copies for class work and we will also utilize the digital version in class.

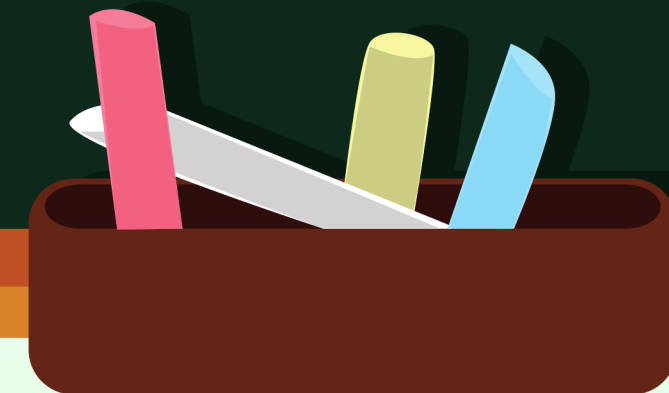
This curriculum addresses the Florida BEST standards. We also use Top Score Writing.



STANDARD PUPIL PROGRESSION CONT.



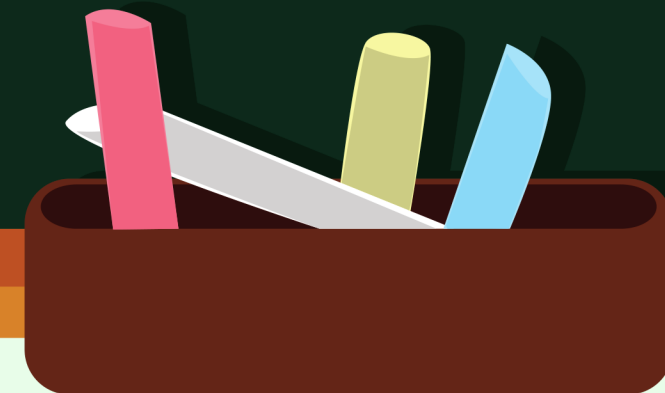
This is what the icon looks like!



ACCESS POINTS

Our students on Access Points alternate standards are using the district provided "Unique" ELA curriculum from n2y.

We focus heavily on repeated readings of passages and looking back to find answers to comprehension questions.



TESTING



F.A.S.T. - Florida Assessment of Student Thinking

ELA GRADING

3rd grade:

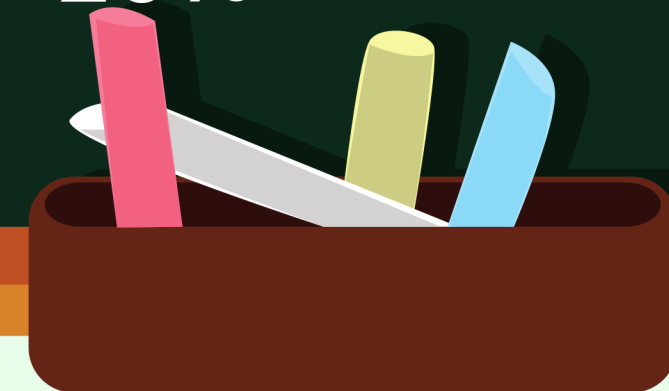
Tests: 50%
Quizzes: 30%
Classwork/HW:
20%

4th grade:

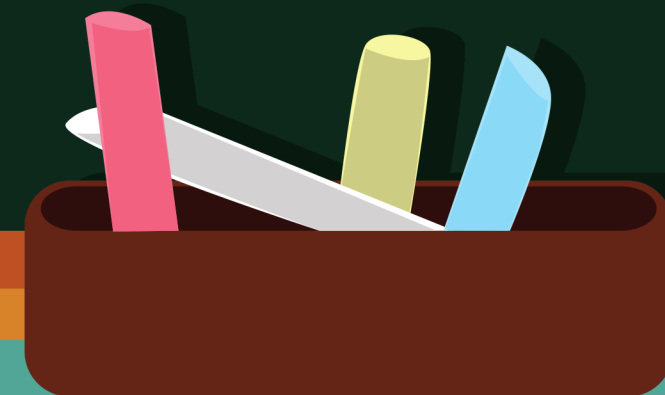
Tests: 50%
Quizzes: 30%
Classwork/HW:
20%

5th grade:

Tests: 50%
Quizzes: 30%
Classwork/HW:
20%



MATH
INFO



STANDARD PUPIL PROGRESSION



The district has adopted GoMath for the new BEST standards – this is found in the Ed Learning icon on Classlink.

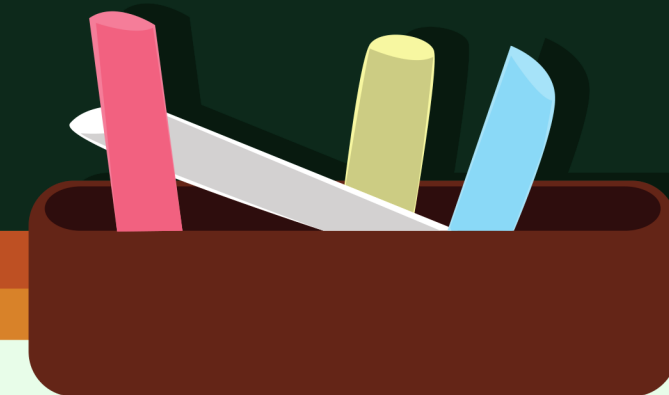
We have 1 quiz per chapter and 1 chapter test

Retake policy: Students are able to retake math tests by request. Retakes will be able to increase scores to a maximum of a 70%

ACCESS POINTS

Our students on Access Points alternate standards are using the district provided "Unique" math curriculum from n2y.

This curriculum works on repetition of skills to build fluency and application skills.



TESTING



F.A.S.T. - Florida Assessment of Student Thinking

MATH GRADING

3rd grade:

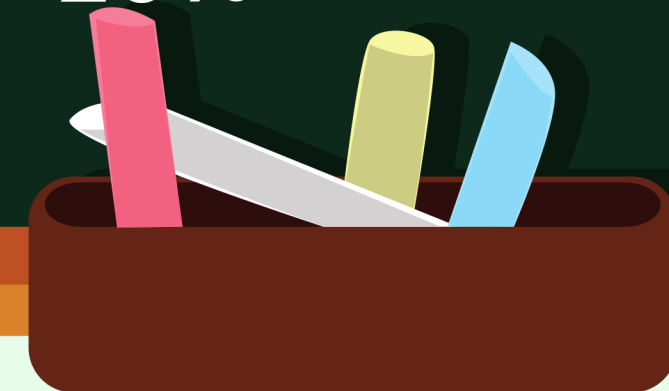
Tests: 50%
Quizzes: 30%
Classwork/HW:
20%

4th grade:

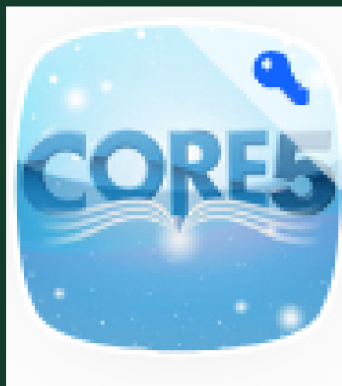
Tests: 50%
Quizzes: 30%
Classwork/HW:
20%

5th grade:

Tests: 50%
Quizzes: 30%
Classwork/HW:
20%



INTERVENTIONS AND PROGRESS MONITORING



Lexia - reading intervention that is mostly computer based



Learning Ally

Audiobooks for leisure reading and for novel studies

Additional interventions are chosen based on student needs and target skills to start building based on the science of reading.



INTERVENTIONS AND PROGRESS MONITORING



Ed Learning (DL)

Waggle Math is found
through this icon

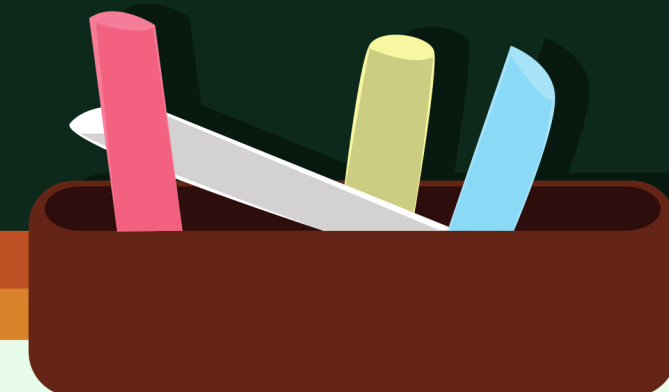


iReady
Student/Teacher
(D...

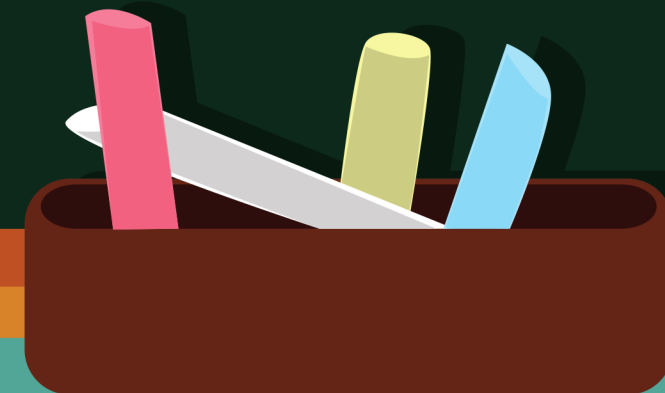
Math interventions -
computer based



Reflex Math for fact
fluency



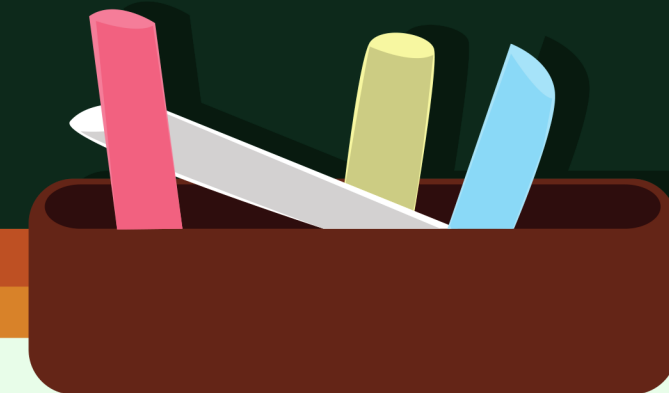
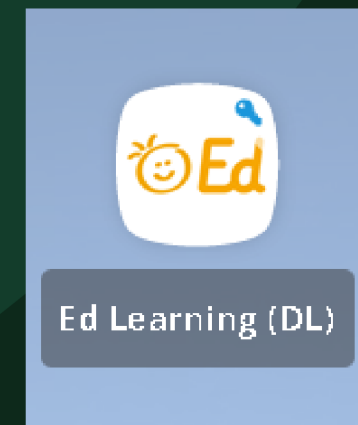
SCIENCE INFO



SCIENCE CURRICULUM

We utilize HMH Florida Science as our curriculum (Ed on classlink) and we will learn about topics such as:

- Studying science
- The engineering process
- Earth's place in space
- Minerals and resources,
- etc.



SCIENCE TESTING

- 5th grade only
- **ONLINE THIS YEAR**
- Still waiting for more information on how this will look.

SCIENCE GRADING

3rd grade:

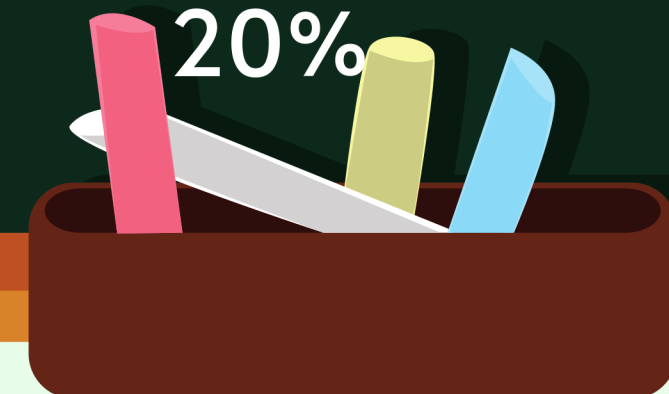
Tests: 50%
Quizzes: 30%
Classwork/HW:
20%

4th grade:

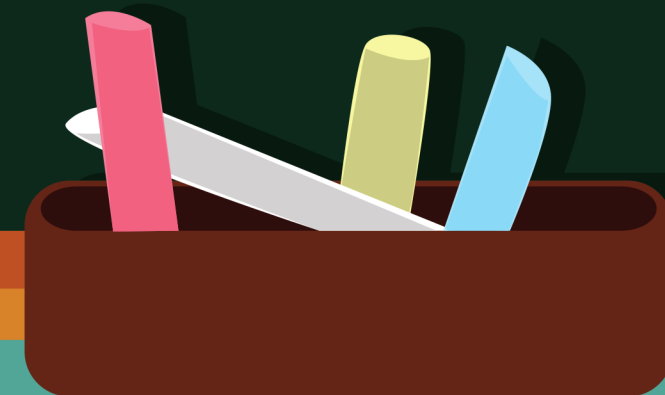
Tests: 50%
Quizzes: 30%
Classwork/HW:
20%

5th grade:

Tests: 50%
Quizzes: 30%
Classwork/HW:
20%



SOCIAL STUDIES INFO



The background features a light green wall. On the left, a potted plant with large green leaves sits on a dark grey pot. On the right, a Monstera plant with large, split leaves is partially visible. In the bottom right corner, a small brown wooden box holds several colorful highlighters (pink, yellow, blue, and white). The central focus is a large chalkboard with a dark green surface and a thick orange border. The title 'SOCIAL STUDIES CURRICULUM' is written in white, bold, sans-serif capital letters at the top of the chalkboard, underlined. Below the title, a paragraph of text is written in a smaller white sans-serif font.

SOCIAL STUDIES CURRICULUM

The final adoption date of the new curriculum is set to occur soon with materials arriving in January. Until then, we will use an online version of "Florida Studies Weekly" to address our social studies standards.

GRADING

3rd grade:

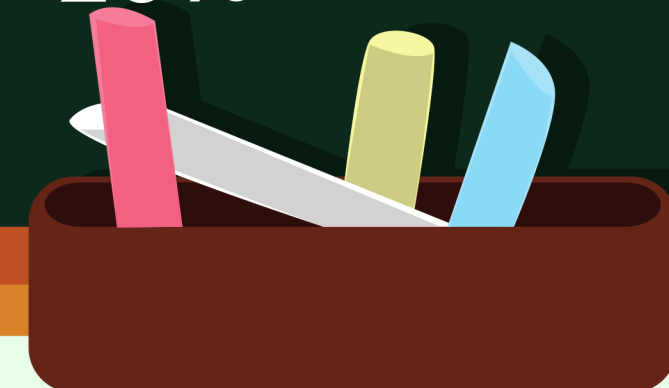
Tests: 50%
Quizzes: 30%
Classwork/HW:
20%

4th grade:

Tests: 50%
Quizzes: 30%
Classwork/HW:
20%

5th grade:

Tests: 50%
Quizzes: 30%
Classwork/HW:
20%



WAY OF WORK



WAY OF WORK

- IEP meetings are encouraged to be held in person
- Unfinished work in the front pocket of your student's binder should be completed as homework
- The best way to contact me is the Remind app
- Paraprofessionals are not the point of contact about behaviors
- PikMyKid for dismissal
- Absence and tardy excusals go through the front office



The background is a solid teal color. Overlaid on this are several white, organic, cloud-like shapes. Green foliage is scattered around the white shapes: a large monstera leaf on the left, a thick green vine with a loop on the top right, and some palm fronds at the bottom.

PARENT PORTAL/FOCUS

Need your username and password?

Call District HELP DESK at 487-7524

or email at

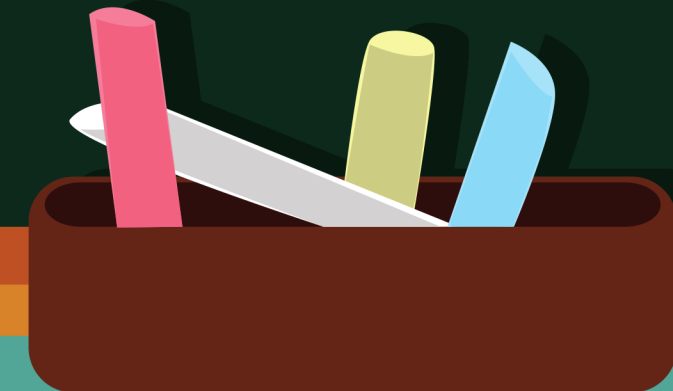
FOCUShelp@leonschools.net

CLASSLINK LOGIN

Student login at home:

9-DigitStudentID#@edu.leonschools.net

Password: 5digitLunch#



The graphic features a central chalkboard with an orange border. To the left is a potted plant with green leaves. To the right is a brown pencil holder containing pink, yellow, and blue pencils. A large green leaf is visible in the top right corner.

FIELD TRIPS

3rd grade: Joe Budd in April (either the 2nd, 3rd, or 4th - specific dates will be communicated closer to the trip)

4th grade: St. Augustine February 16th

5th grade: Symphony field trip December 7th and Sea World (date TBA)

If you would like to chaperone, you **MUST** complete a volunteer application every year.

SPECIAL OLYMPICS

October 18th is Special Olympics Unity Day. Orange shirts are here and I will give them to your student on the 17th! I am working with Special Olympics Florida to come up with things to do during the year



EXTRA INFO



THINGS TO DO AT HOME

- AR tests (yes you can take them at home!)
- Math fact fluency practice
- Check binder daily for any homework/unfinished work
- Increase expectations for independence at home
- Look at the FAST website and practice test

